



## INSTALLATION INSTRUCTIONS

### **RV** Pour In Place Step Light

#### Voltage/ Power Supply:

##### **LED**

- **12v DC**
- Powered by Magnetic Low Voltage Drivers
- Polarity Sensitive  
(red or black is positive, white or blue is negative)
  - If lights don't illuminate, try reversing the leads.
  - Restore electricity & check operation of fixture.

##### **INCANDESCENT**

- **12v AC**  
Both Standard (STD) & Extra Bright (EB)
- Powered by Magnetic Low Voltage Transformers

Fixtures are packed in plastic bags for protection during the shipping process. Please note tagging code if required.

**! DISCONNECT THE POWER BY TURNING OFF CIRCUIT BREAKER OR REMOVING FUSE AT FUSE BOX !**

**! Do not plug the fixtures directly into the electrical outlet !**

#### **Installation:**

Prepare the step forms for fixture placement. Mechanical tape can often be used to hold the fixture in place during the concrete pour: zip ties may also be a viable option. It's important to install the fixture in a manner that does not "pinch" the internal channel of housing. Also, be mindful that the fixture is oriented in a "downward" manner. Use the conduit bushing provided to connect the fixture and conduit.

cont...

**Any questions on voltage type, maximum wattage, or re-lamping, please call or contact us at:**



ROBERTS STEP-LITE SYSTEMS ■ 8100 SW 15th St. ■ Oklahoma City, OK 73128  
info@robertsstemplite.com ■ www.robertsstemplite.com  
405.728.4895 ■ 800.654.8268 ■ F: 405.728.4878



**RV**

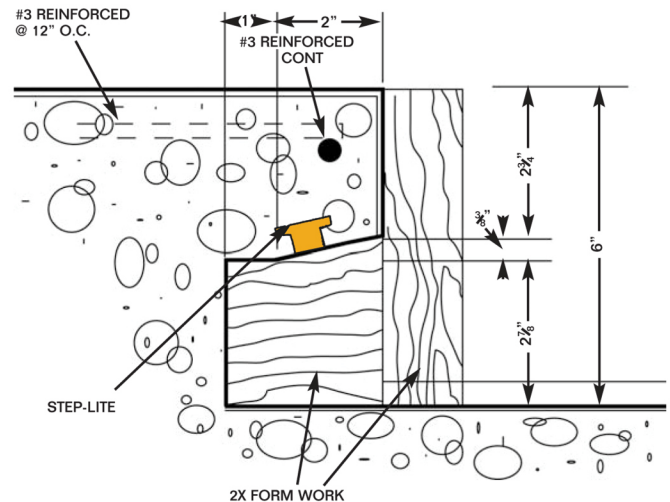
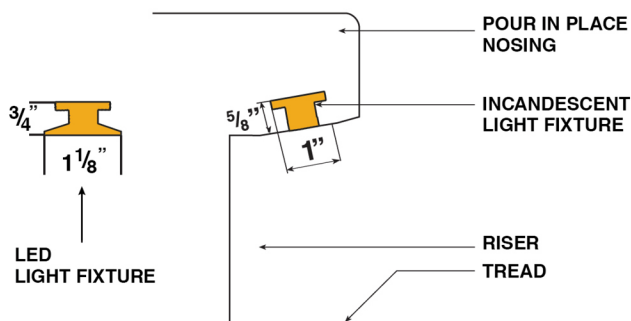
## Pour In Place Step Light

**continued**

### Special Notes:

All electrical connections must be in accordance with local codes, ordinances, or the national electrical code. If you are unfamiliar with methods of installing electrical wiring, retain the service of a qualified licensed Electrician. Before starting the installation, disconnect the power by turning off the circuit breaker or removing the fuse from the fuse box. Turning off the light switch is not sufficient to prevent electrical shock.

Connect the wires from the fixture to the low voltage wires from the power supply. Use UL/CSA listed connectors suitable for the size and type of wire. No loose strands or loose connections should be present.



**Any questions on voltage type, maximum wattage, or re-lamping, please call or contact us at:**



ROBERTS STEP-LITE SYSTEMS ■ 8100 SW 15th St. ■ Oklahoma City, OK 73128  
info@robertsstemplite.com ■ www.robertsstemplite.com  
405.728.4895 ■ 800.654.8268 ■ F: 405.728.4878

